

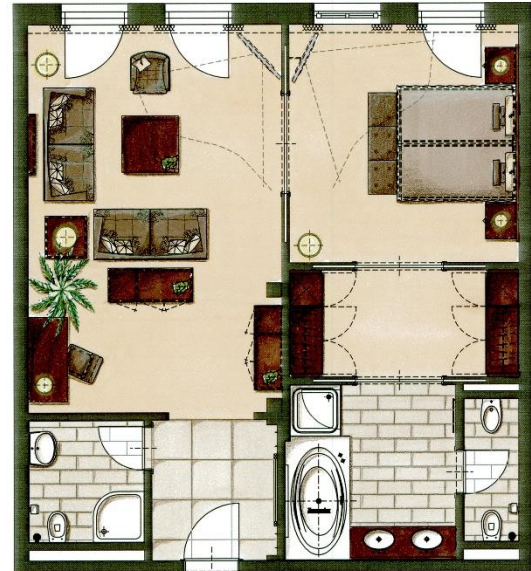


# Royal Suite Isel (78 m<sup>2</sup>)



facing the Dolomites of Lienz and the glacial river Isel  
 1 bedroom, 1 living room, 2 Flat-TVs, balcony  
 2 bathrooms, bathtub and shower/separate toilette and bidet

	From 1 Night	From 3 Nights
	2 Persons	2 Persons
<b>Summer</b> 24.05.2025- 30.09.2025	€ 530,00	€ 520,00
<b>Winter</b> 07.12.2024- 19.12.2024 06.01.2025- 16.03.2025	€ 500,00	€ 490,00
<b>Christmas/ New Years Eve</b> 20.12.2024- 05.01.2025 Minimum Stay of 5 Nights	€ 600,00	
<b>Fall</b> 01.10.2024- 06.12.2024 Hotel closed 02.11-24.11.2024	€ 470,00	
<b>Spring</b> 31.03.2025- 23.05.2025	€ 430,00	



The prices are in Euro per room and per night, including breakfast.

*\*Subject to change without notice*

Local tax of € 2,60 per person and night will be charged separately. (from 15 years)

All rooms are equipped with: Bathtub, shower, separate WC, TV, tablet, safe, minibar, coffee machine, hairdryer and bathrobe and some with bidet